



# CONTINUOUS MINER GCM230

## Specification

### Operating Dimensions

Mining range	1270 - 2540 mm (50 - 100 in)
Minimum height	1118 mm (44 in)
Maximum reach	2845 mm (112 in )
Ground Clearance	229 mm (9 in)
Length rear bumper to face	8153 mm (26 ft 9 in)

### Transport Dimensions

Frame width	3277 mm(10 ft 9 in) (over rub rails)
Overall length	11 049 mm(36 ft 3 in)
Height	991 mm(39 in) (over scrubber duct)
Weight (total)	63.5 tonnes(140,000 lbs)

### Cutting Unit

Cutting drum diameter	1118 mm (44 in)
Cutting drum width	3531 mm (11 ft 7 in)
Cutting power	2 x 201 kW (2 x 270 hp) motors (one hour rating)

### Optional Dust Suppression

Scrubber assembly	Top Mounted
Scrubber type	Wet bed
Scrubber capacity	2.8 cms (6000 cfm)
Fan power	1 x 22 kW (1 x 30 hp) motor

### Electrical System

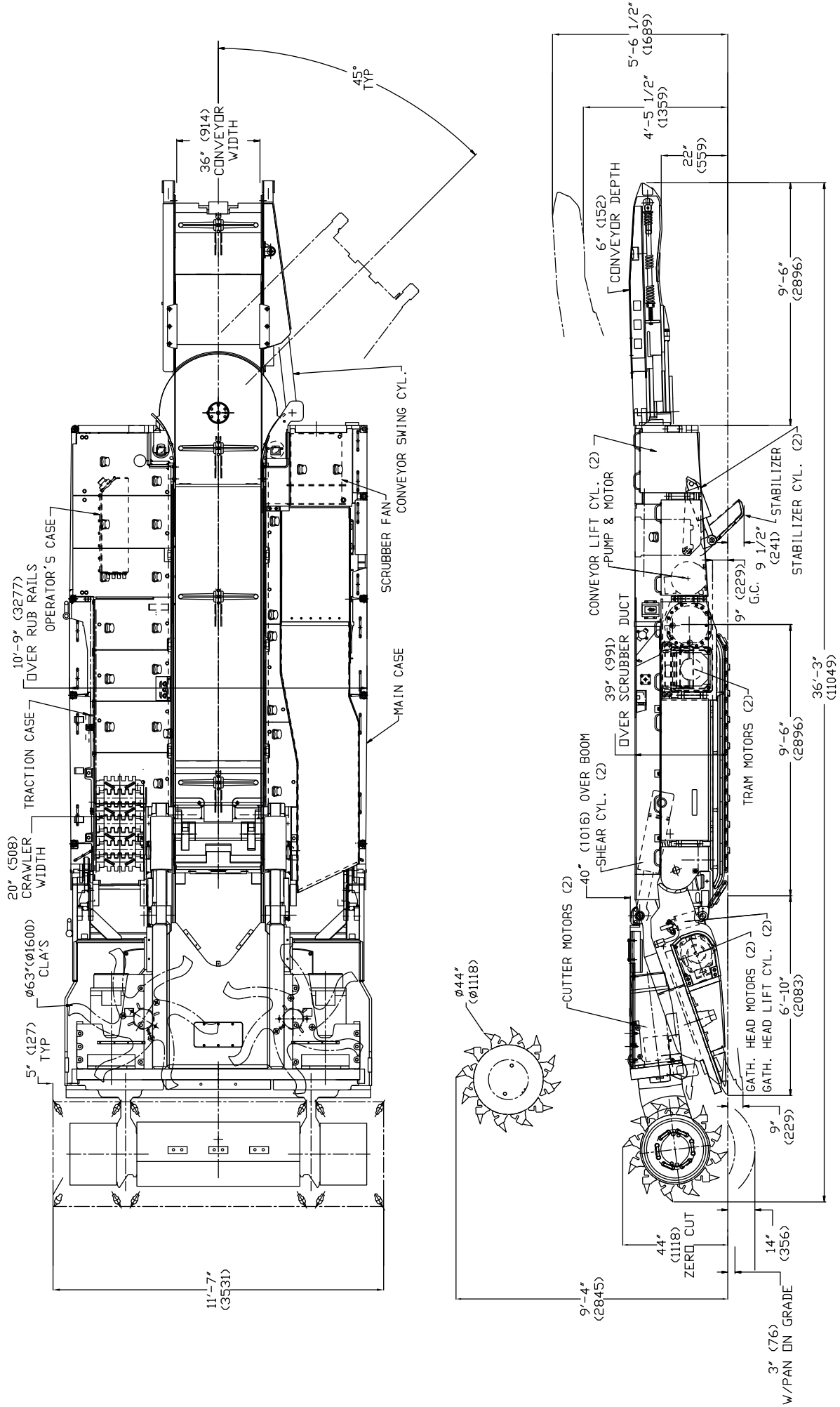
Machine voltage (International voltages available)	950 VAC 60 Hz
Control system	Processor based/ radio remote control

### Total Installed Power

680 kW (910 hp) (one-hour rating w/o scrubber)

### Loading Unit

Loading method	6 finger CLA
Conveyor width	914 mm (36 in)
Conveyor depth	152 mm (6 in)
Loading capacity	18 - 23 tonnes/min (20-25 tons/min)
Conveyor power	2 x 37 kW (2 x 50 hp) motors (one hour rating)



## Continuous Miner—GCM230

---

### Traction Unit

---

Crawler chain width	508 mm (20 in)
Crawler assembly length	2896 mm (9 ft 6 in)
Ground pressure	212 kPa (30.7 psi)
Crawler speed	0 - 26 m/min (0 - 85 fpm)
Traction power	2 x 82 kW (2 x 110 hp) AC/VFD (one hour rating)

---

### Pump Unit

---

Pump power	1 x 37 kW (1 x 50 hp) motor (one hour rating)
------------	--



**GAINWELL**  
ENGINEERING

#### **India**

Gainwell Engineering Private Limited  
Godrej Genesis Technology Park  
Unit 401, 402, 403, Plot X1  
Block EP & GP, Salt Lake  
Sector V, Kolkata – 700091, India  
Email : [info@gainwellengineering.com](mailto:info@gainwellengineering.com)

#### **Australia**

Gainwell Engineering Pacific Pty Limited  
135 Bulls Garden Road  
Gateshead, NSW 2290  
+61 0240721130  
Phone : (02) 4072 1130  
Email : [cs@gainwellengineering.com](mailto:cs@gainwellengineering.com)

#### **Singapore**

Gainwell Engineering Global PTE. Limited  
39 Robinson Road  
#15-01, Robinson Point  
Singapore 068911  
Phone : +65 98706685  
Email : [finance@enl.com.sg](mailto:finance@enl.com.sg)

#### **USA**

Gainwell Engineering Inc.  
198 Baughan Road  
HICO, West Virginia, 25854  
United States of America  
Phone: 1-304-658-2100  
Email: [inquiries@gainwellengineering.com](mailto:inquiries@gainwellengineering.com)



**GAINWELL**  
ENGINEERING