



**GAINWELL**  
ENGINEERING

# CONTINUOUS MINER GCM345 N

## Specifications

### Operating Dimensions

Mining range	2210 - 4318 mm (87 - 170 in) (recommended)
Minimum height	2057 mm (81 in)
Maximum reach	4623 mm (182 in)
Ground Clearance	356 mm (14 in)
Length rear bumper to face	8204 mm (26 ft 11 in)

### Transport Dimensions

Frame width	3226 mm (10 ft 7 in) (over rub rails)
Overall length	11 252 mm (36 ft 11 in)
Height	1651 mm (65 in) over scrubber duct
Weight (total)	74.8 tonnes (165,000 lbs)

### Cutting Unit

Cutting drum diameter	1118 mm (44 in)
Cutting drum width	3581 mm (11 ft 9 in)
Cutting power	2 x 209 kW (2 x 280 hp) motors (one-hour rating)

### Optional Dust Suppression

Scrubber assembly	Top Mounted
Scrubber type	Wet bed
Scrubber capacity	4.7 cms (10 000 cfm)
Fan power	1 x 30 kW (1 x 40 hp) motor

### Electrical System

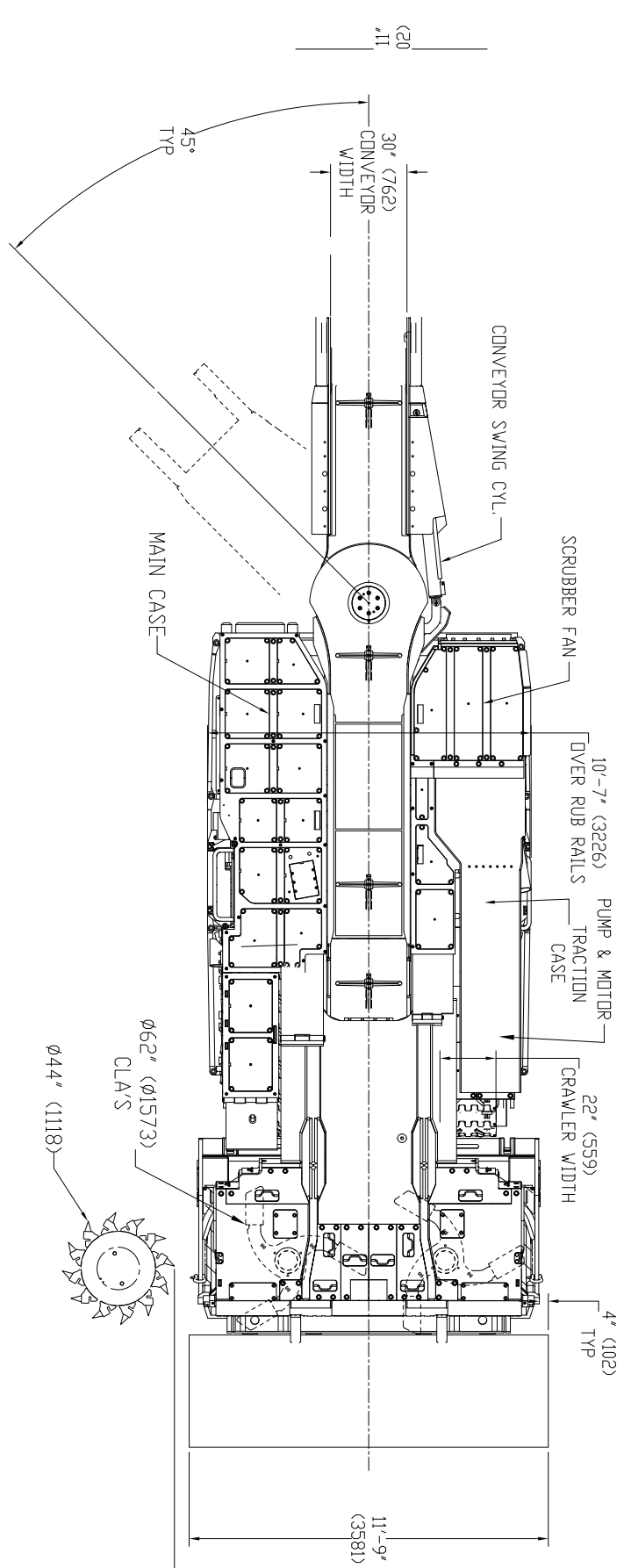
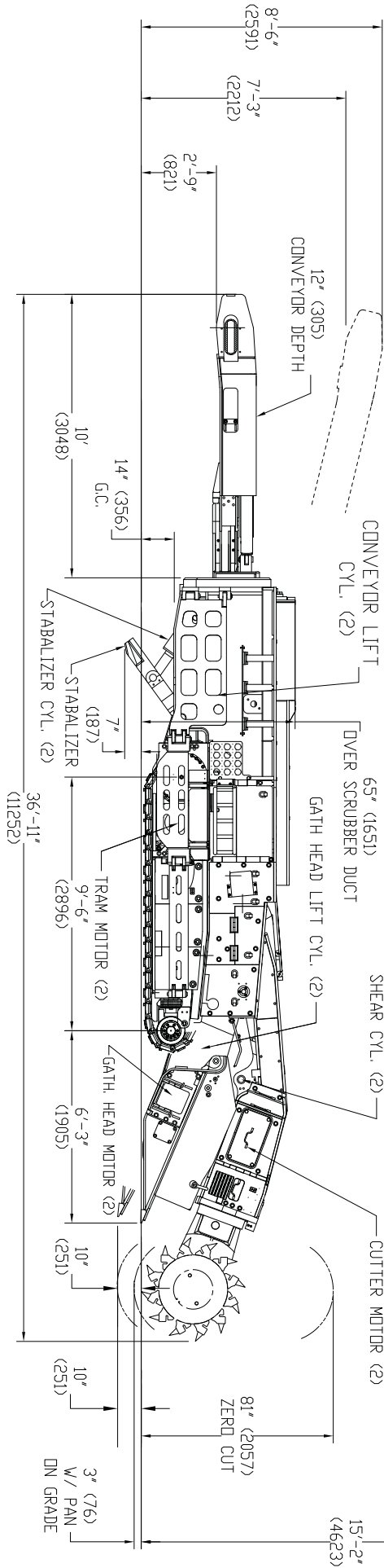
Machine voltage	995 VAC 60 Hz (International voltages available)
Control system	Processor based/

### Total Installed Power

727 kW (975 hp) (one-hour rating)

### Loading Unit

Loading method	3 finger CLA
Conveyor width	762 mm (30 in)
Conveyor depth	305 mm (12 in)
Loading capacity	14 - 35 tonnes/min (15 - 39 tons/min)
Conveyor power	2 x 48 kW (2 x 65 hp) motors (one-hour rating)



## Continuous Miner—GCM345 N

---

### Traction Unit

---

Crawler chain width	559 mm (22 in)
Crawler assembly length	2896 mm (9 ft 6 in)
Ground pressure	227 kPa (32.9 psi)
Crawler speed	0 - 23 m/min (0 - 75 fpm)
Traction power	2 x 82 kW (2 x 110 hp) AC/VFD (one-hour rating)

---

### Pump Unit

---

Pump power	1 x 48 kW (1 x 65 hp) motor (one-hour rating)
------------	--------------------------------------------------



**GAINWELL**  
ENGINEERING

#### **India**

Gainwell Engineering Private Limited  
Godrej Genesis Technology Park  
Unit 401, 402, 403, Plot X1  
Block EP & GP, Salt Lake  
Sector V, Kolkata – 700091, India  
Email : [info@gainwellengineering.com](mailto:info@gainwellengineering.com)

#### **Australia**

Gainwell Engineering Pacific Pty Limited  
135 Bulls Garden Road  
Gateshead, NSW 2290  
+61 0240721130  
Phone : (02) 4072 1130  
Email : [cs@gainwellengineering.com](mailto:cs@gainwellengineering.com)

#### **Singapore**

Gainwell Engineering Global PTE. Limited  
39 Robinson Road  
#15-01, Robinson Point  
Singapore 068911  
Phone : +65 98706685  
Email : [finance@enl.com.sg](mailto:finance@enl.com.sg)

#### **USA**

Gainwell Engineering Inc.  
198 Baughan Road  
HICO, West Virginia, 25854  
United States of America  
Phone: 1-304-658-2100  
Email: [inquiries@gainwellengineering.com](mailto:inquiries@gainwellengineering.com)



**GAINWELL**  
ENGINEERING