

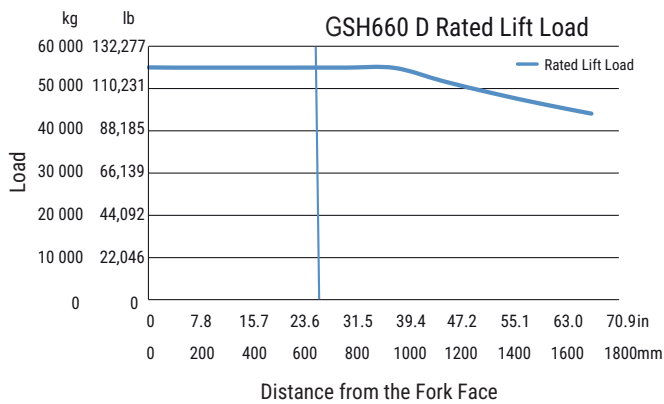


ROOF SUPPORT CARRIER GSH660 D

Specifications

Capacities

Tractive Effort, Maximum	37 500 kg 82,673 lb
Winch (Front)	30 000 kg 66,138 lb
Maximum Un-braked Trailer Mass	23 000 kg 50,706 lb
Capacity of Tow Hitch	40 000 kg 88,184 lb
Lift SAE @ 600 mm (23.6 in) from Fork Face	55 000 kg 121,250 lb



Weight

Unladen with Full Tanks	48 000 kg 105,821 lb
Maximum Laden	103 000 kg 227,076 lb

Engine (6 Cylinder)

Type	Diesel, Turbocharged
Cooling System	Coolant Based Radiator
Radiator Position	Horizontal Rear
Cooling Fan	Hydraulic Driven Fan
Engine Make/Model	Cat® C7
Displacement	7.2 L 439.3 in³
Maximum Power Gross	171.5 kW (230 hp) @ 2,200 rpm
Maximum Torque Tested	895 N·m (660 lb-ft) @ 1,700 rpm

Engine Speeds

Low Idle	800 rpm
High Idle	2,300 rpm

Fuel Consumption

At Full Power	39.4 L/hr 10.4 gal/hr
Average Mine Duty	20-40 L/hr 5.5-10.5 gal/hr

Exhaust Conditioner

Type	Flameproof Wet
Exhaust Filter	Replaceable Element Except China
Exhaust Flame Trap Aftertreatment	Replaceable China and RSA Catalytic Exhaust Purifier

Transmission

Speeds, Forward and Reverse	4
-----------------------------	---

Torque Converter

Type	Integral
------	----------

Axles

Front Axle	Heavy Duty Fixed
Rear Axle	Heavy Duty Bolster Mount

Wheels/Tires – Standard

Size	1371 mm O/D × 711 mm Wide (54 in O/D × 28 in Wide)
Inflation Media	Solid
Wheel Chains	Optional

Ground Pressure

Laden Front	1433 kPa	222 psi
Laden Rear	480 kPa	70 psi
Un-laden Front	450 kPa	65 psi
Un-laden Rear	800 kPa	116 psi

Service Brake

Type	Totally Enclosed, Wet Type
Application	Spring Applied Hydraulic Released

Park Brake

Type	Totally Enclosed, Wet Type
Application	Spring Applied Hydraulic Released

Articulation

Degrees of Turn Either Side	45 Degree
-----------------------------	-----------

Oscillation

Degrees Up and Down from Horizontal	7.5 Degree
-------------------------------------	------------

Canopy

Type Protective Device	MDG1
Optional ROPS/FOPS	

Electrical System

Type	Approved Flameproof
Voltage	24V

Shutdown System

System Type	DCS Electronic Intrinsically Safe Approved
-------------	-----------------------------------------------

Lights

Number/Location	STD 2 Front, 2 Rear
-----------------	---------------------

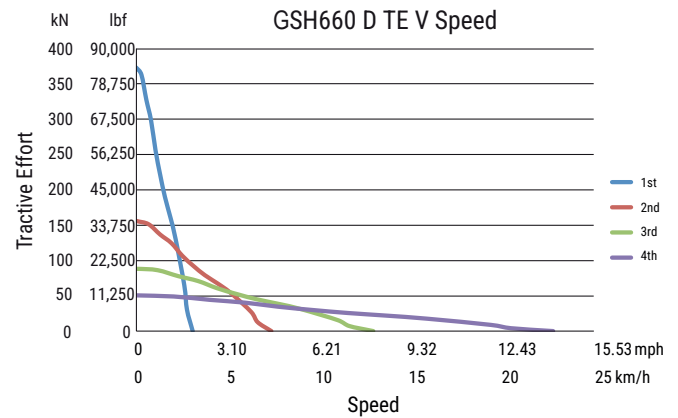
Service Capacities

Hydraulic Tank	510 L	134.7 gal
Fuel Tank	370 L	97.1 gal
Transmission/Converter Oil	40 L	10.6 gal
Drop Box Oil	8 L	2.1 gal
Engine Crankcase Oil	25 L	6.6 gal
Engine Cooling System Water	72 L	19.0 gal
Axle Oil (Each)	60 L	15.9 gal
Water Make Up Tank	450 L	118.9 gal

Rated Speed/Un-Laden/No Grade

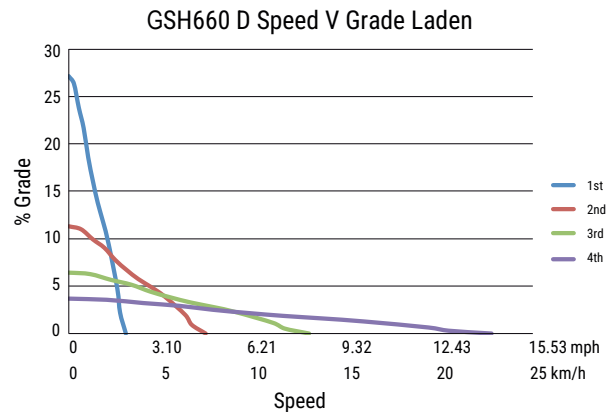
1st Gear	2.6 km/h	1.6 mph
2nd Gear	6.3 km/h	3.9 mph
3rd Gear	11.1 km/h	6.9 mph
4th Gear	19.5 km/h	12.1 mph

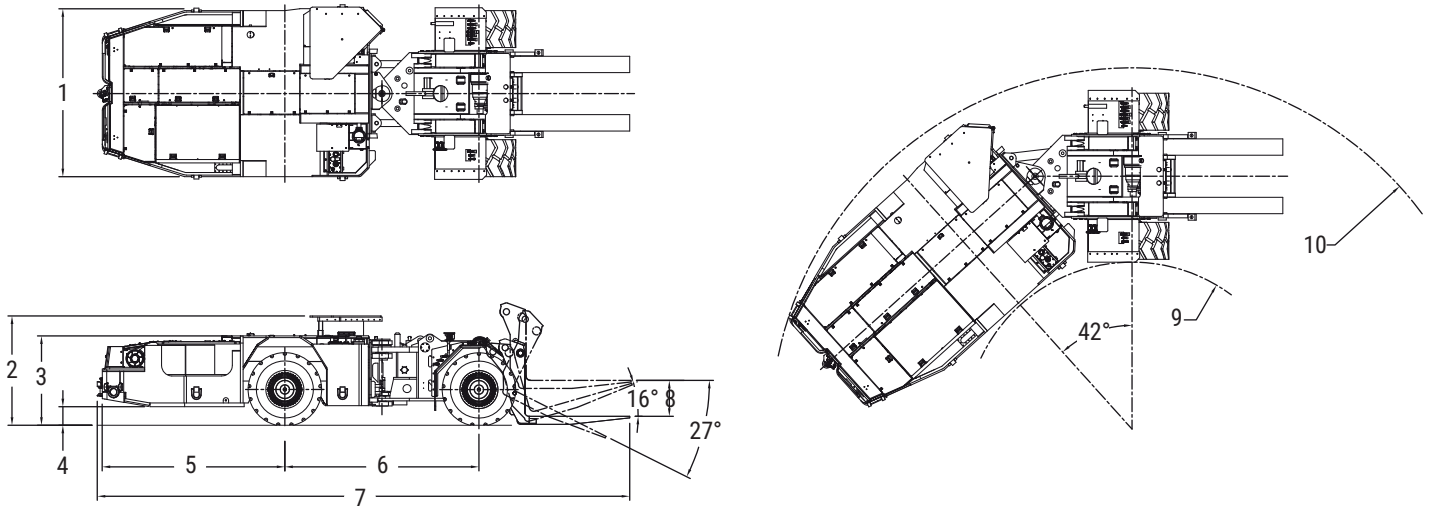
Maximum Tractive Effort



Grade Ability

Front to Rear	1:5
Side to Side (Empty)	1:4
Side to Side (Laden)	1:8




Dimensions (All dimensions are approximate.)

1 Width	3130 mm	129.1 in
2 Height – Top of ROPS		
LOW Canopy Mount	1980 mm	78.0 in
MID Canopy Mount	2050 mm	80.7 in
HIGH Canopy Mount	2120 mm	83.5 in
3 Height – Top of Covers	1670 mm	26.4 in
4 Height – Ground Clearance	340 mm	13.4 in
5 Length – Rear Axle to Bumper	3410 mm	134.3 in
6 Length – Wheel Base	3620 mm	142.5 in
7 Length – Overall	9940 mm	391.2 in
8 Lift Height of Fork	670 mm	26.7 in
9 Turning Radius – Inside Dimension	3120 mm	122.8 in
10 Turning Radius Outside Dimension	6740 mm	265.4 in

GSH660 D Roof Support Carrier

OPTIONAL EQUIPMENT

- Load indication gauge system
- 3126 DTI flame proof package
- Fire suppression systems
- ROPS/FOPS certified canopy
- Tow chains
- Wheel chains
- Alternative approved electrical components (lights, alternators, hour meters, etc.)
- Exhaust flame trap (optional) wet, standard for China, standard for RSA
- Auto lubrication system
- Chock carry plate
- Power assist trailer connection and fixed fifth wheel plate
- 12V electrical system STD 3126 DTI

India

Gainwell Engineering Private Limited
Godrej Genesis Technology Park
Unit 401, 402, 403, Plot X1
Block EP & GP, Salt Lake
Sector V, Kolkata – 700091, India
Email : info@gainwellengineering.com

Australia

Gainwell Engineering Pacific Pty Limited
135 Bulls Garden Road
Gateshead, NSW 2290
+61 0240721130
Phone : (02) 4072 1130
Email : cs@gainwellengineering.com

Singapore

Gainwell Engineering Global PTE. Limited
39 Robinson Road
#15-01, Robinson Point
Singapore 068911
Phone : +65 98706685
Email : finance@enl.com.sg

USA

Gainwell Engineering Inc.
198 Baughan Road
HICO, West Virginia, 25854
United States of America
Phone: 1-304-658-2100
Email: inquiries@gainwellengineering.com